

N A I S H

ESTATE AGENTS



YORK
EST. 1939



BT3 Allerton Lane, Allerton Castle

Allerton Park, Knaresborough, HG5 0SE

An exemplary two-bedroom maisonette set within the grounds of one of Britain's best preserved Grade-I Listed stately homes.

£1,250 Per Calendar Month

BT3 Allerton Lane, Allerton Castle

Allerton Park, Knaresborough, HG5 0SE



- Located in an Exquisite Grade-I Listed Stately Home
- Access to Mature Communal Gardens and Castle Grounds
- Pet Friendly
- Converted Maisonette Set Over Two Levels
- Allocated Parking within a Private Courtyard
- Close Proximity to Harrogate, York and the A1
- Charming Period Features Throughout
- Prime Countryside Location

Property Description

Utilities & Costs

Holding Fee Disclaimer

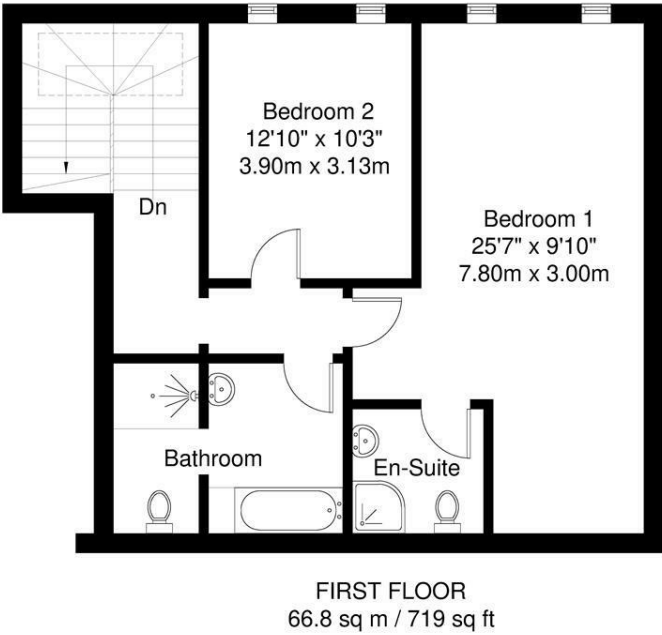
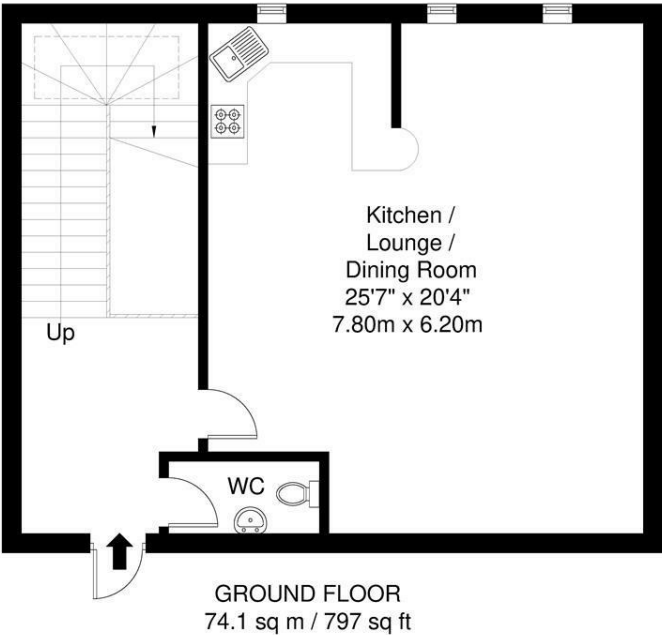


Directions



Floor Plan

3 Allerton Castle



APPROXIMATE GROSS INTERNAL AREA = 140.9 sq m / 1516 sq ft

Whilst every attempt has been made to ensure the accuracy of the floorplan contained here, measurements of doors, windows, rooms and any other items are approximate and no responsibility is taken for any error, omission or mis-statement. This plan is for illustrative purposes only and should be used as such by any prospective purchaser. The services, systems and appliances shown have not been tested and no guarantee as to their operability or efficiency can be given.

These particulars, whilst believed to be accurate are set out as a general outline only for guidance and do not constitute any part of an offer or contract. Intending purchasers should not rely on them as statements of representation of fact, but must satisfy themselves by inspection or otherwise as to their accuracy. No person in this firms employment has the authority to make or give any representation or warranty in respect of the property.

Energy Efficiency Rating		
	Current	Potential
Very energy efficient - lower running costs		
(92 plus) A		85
(81-91) B		
(69-80) C		
(55-68) D	68	
(39-54) E		
(21-38) F		
(1-20) G		
Not energy efficient - higher running costs		
England & Wales		EU Directive 2002/91/EC